

ISO/IEC JTC 1/SC 32 N 0454

Date: 2000-02-15

REPLACES: --

<p style="text-align: center;">ISO/IEC JTC 1/SC 32</p> <p style="text-align: center;">Data Management and Interchange</p> <p style="text-align: center;">Secretariat: United States of America (ANSI) Administered by Pacific Northwest National Laboratory on behalf of ANSI</p>

DOCUMENT TYPE	Other Document (Open)
TITLE	Presentation - Purpose of the Japanese NWI Proposal
SOURCE	Japan National Body (Hajime Horiuchi)
PROJECT NUMBER	
STATUS	Interested parties are invited to participate. Approved for Study Period by SC 32 at the Santa Fe meeting 2000-01-28 Resolution 8.
REFERENCES	
ACTION ID.	FYI
REQUESTED ACTION	Interested parties should contact the Japan National Body
DUE DATE	
Number of Pages	31
LANGUAGE USED	English
DISTRIBUTION	P & L Members SC Chair WG Conveners and Secretaries

Douglas Mann, Secretariat, ISO/IEC JTC 1/SC 32

Pacific Northwest National Laboratory *, 901 D Street, SW., Suite 900, Washington, DC, 20024-2115, United States of America

Telephone: +1 703 575 2114; Facsimile: +1 703 681 9180; E-mail: MannD@battelle.org

available from the JTC 1/SC 32 WebSite <http://bwonotes5.wdc.pnl.gov/SC32/JTC1SC32.nsf>

*Pacific Northwest National Laboratory (PNL) administers the ISO/IEC JTC 1/SC 32 Secretariat on behalf of ANSI

Purpose of the Japanese NWI Proposal

*Hajime Horiuchi
Japan,*

Email: hor@tiu.ac.jp

URL: [//www.cbop.gr.jp](http://www.cbop.gr.jp)

Change the Title !!

Framework

for Classification & Identification
of Enterprise Objects



Global classification & Identification of
Enterprise Business Objects

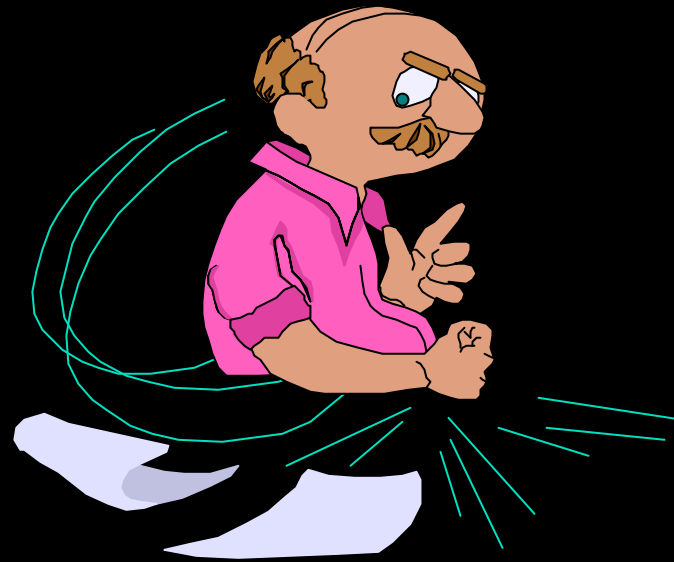
The benefits of the Meta-Model reference model :

- Provide common bases for exchanging information contents among different domains and different organizations across countries.
- Provide common bases for effective evaluation mechanism of proprietary components, by asking for each components to declare their ingredients with specifying standard elements.
- Provide common bases for evaluating business performance of the enterprise.
- Provide common bases for effective investigation of business modeling and its change which might cause software system changes.

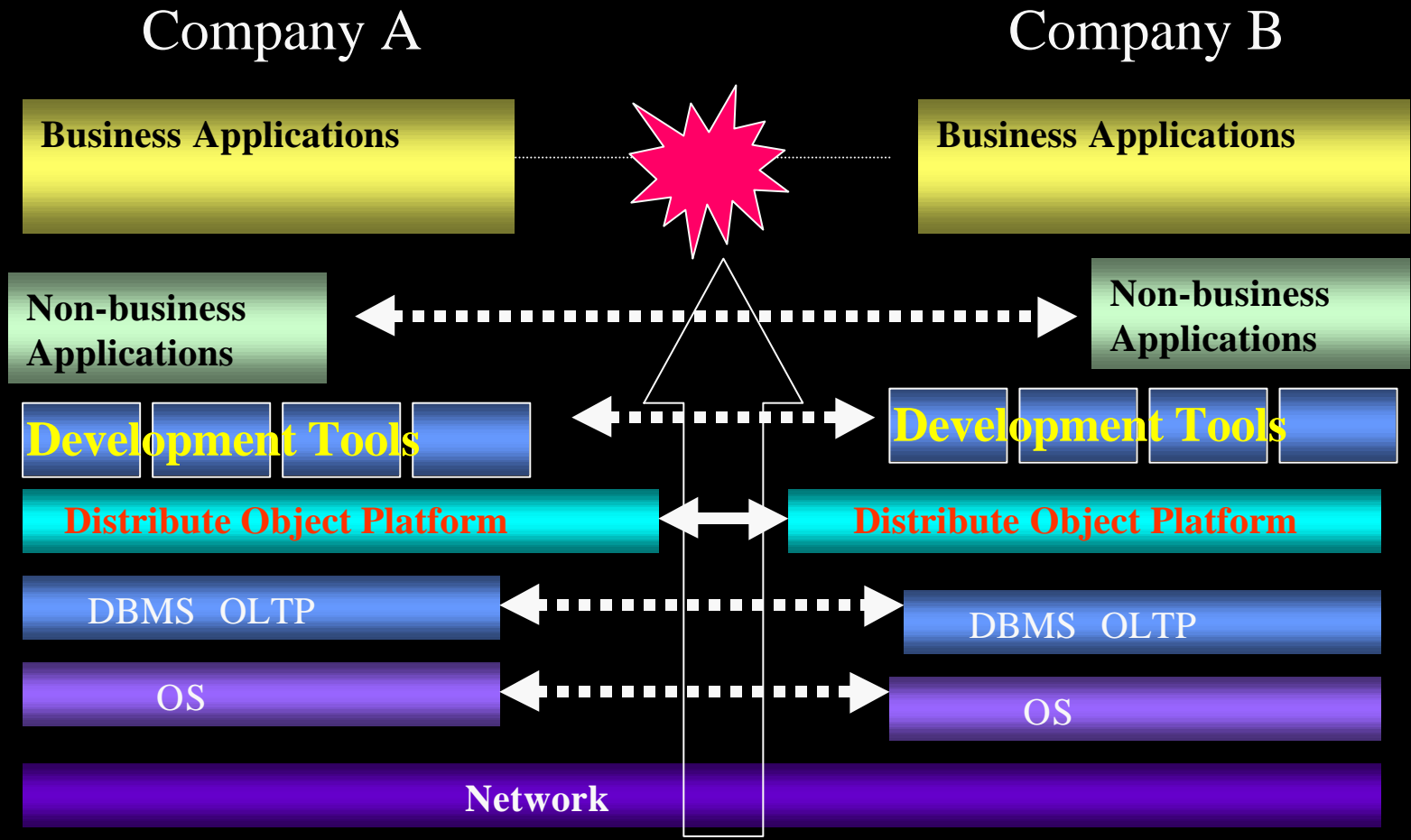
Classification & Identification of Enterprise Business Objects

- Common view to the metadata for categorizing and structuring business objects or enterprise objects, extending ISO/IEC 11179 Specifications.
- The enterprise objects which consist of both information and process elements

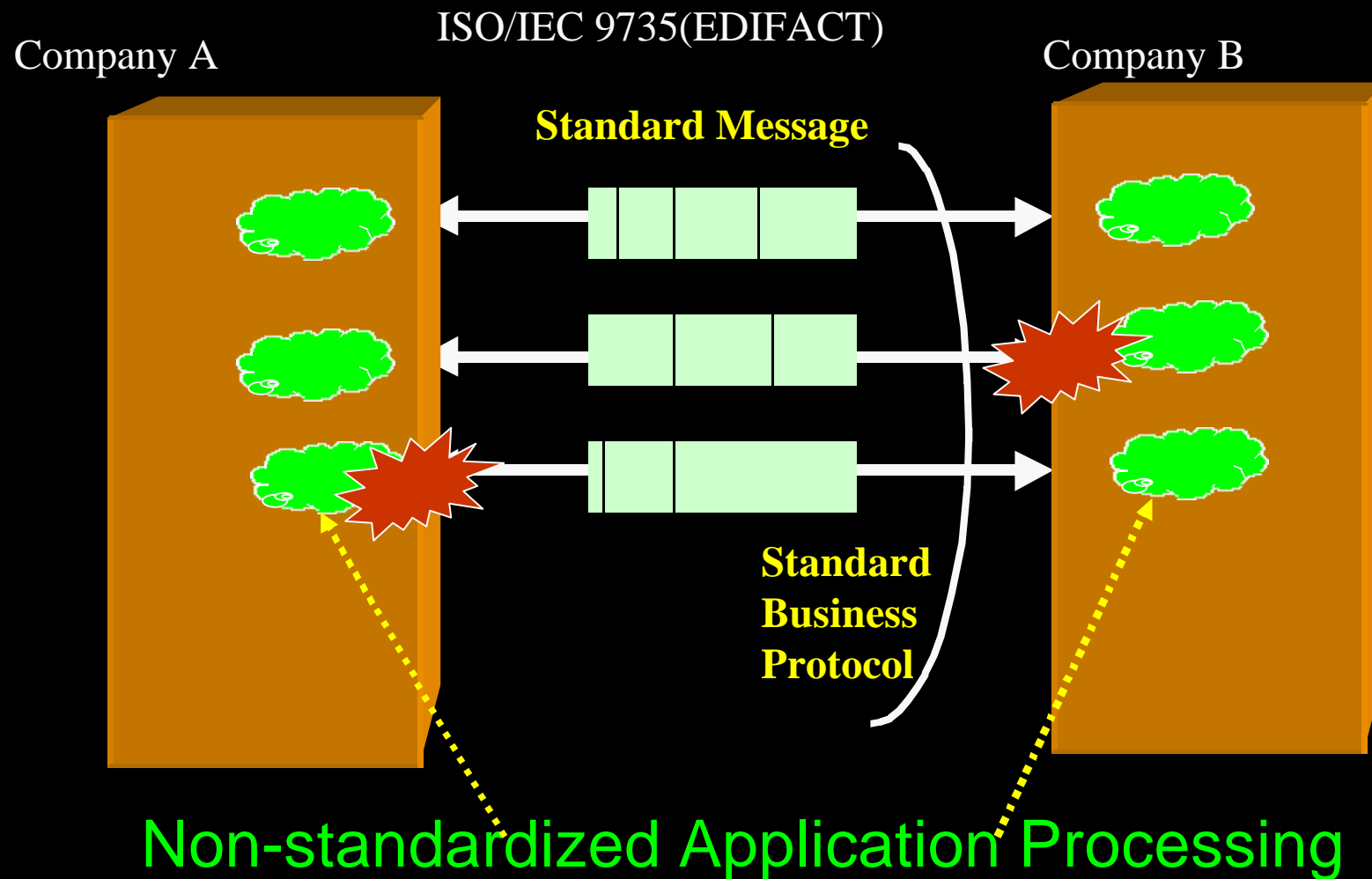
Problems to be addressed



Current status of System Collaboration



Current Status of Collaboration



We Need !!

Common Business Objects

and Its Architecture,

rather than

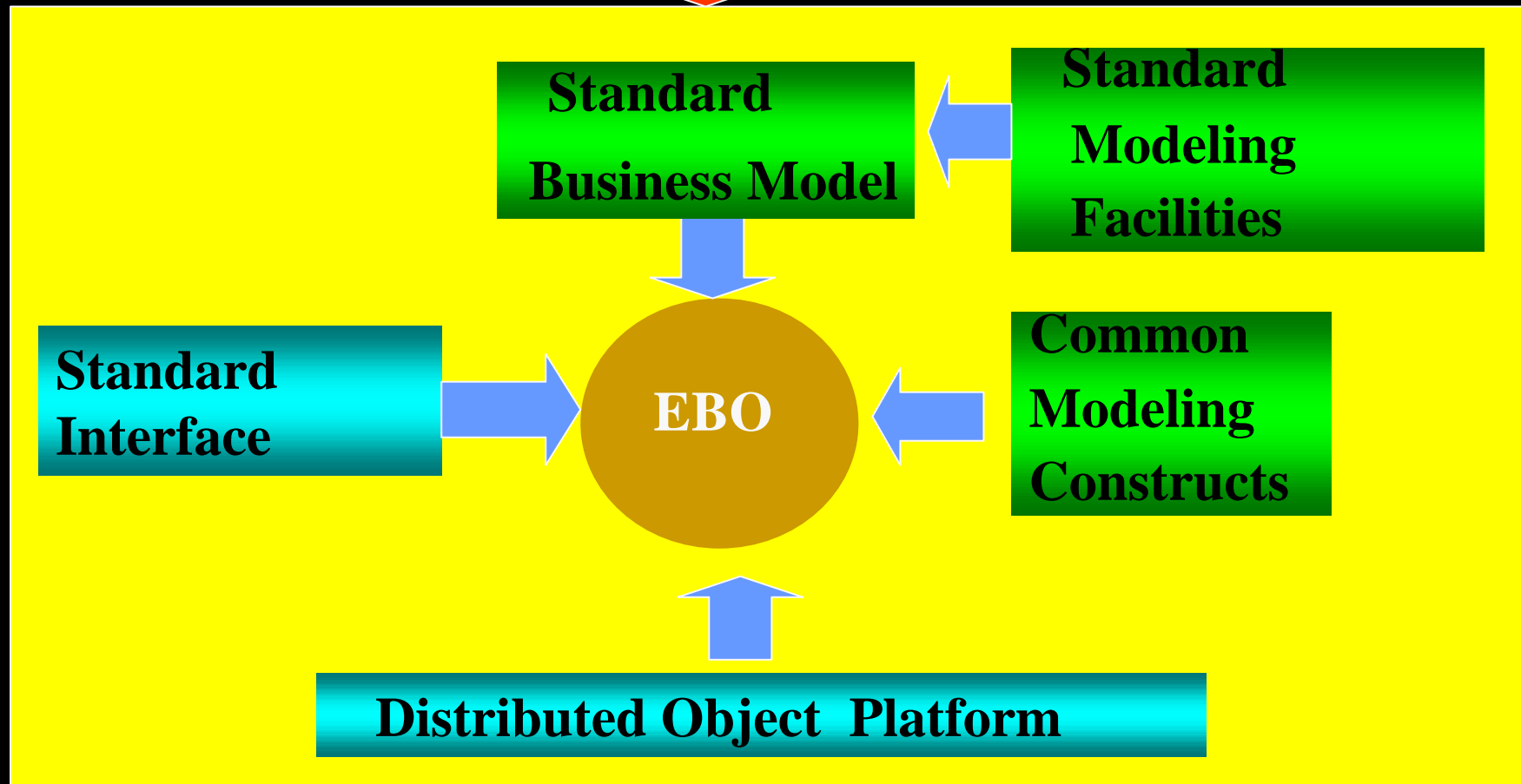
Computerized Software Platforms,

to enable the collaboration among

different enterprises

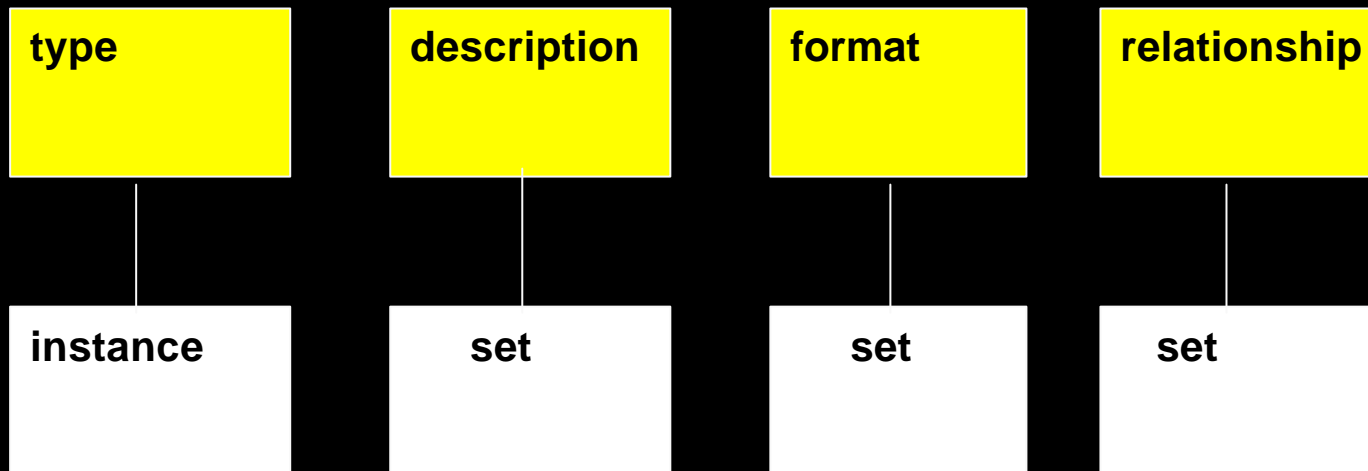
Sharing EBO Infrastructure

Common Framework of Meta Model



Confusions in the Meta Concept

Which is correct ?



- A clear definition of the meta concept should be provided.
- A normative hierarchy of the meta data should be defined.
- Sets of normative constructs should be provided.

Why so many consortia discuss Meta

- Business Collaborations caused by Internet
- Sharing & Exchanging of data + processes among different Organizations
- Common Software Components for quick building of system

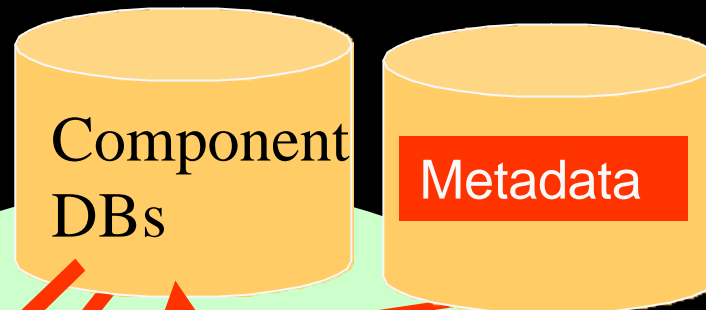
Software Component Mart

//copmonentsource.com

//componentRegistry.com

Component Mart

Component users



Component search

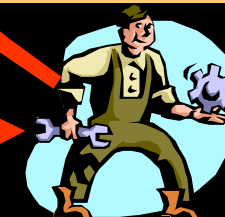
Evaluation and verification

XML

Billing for component use

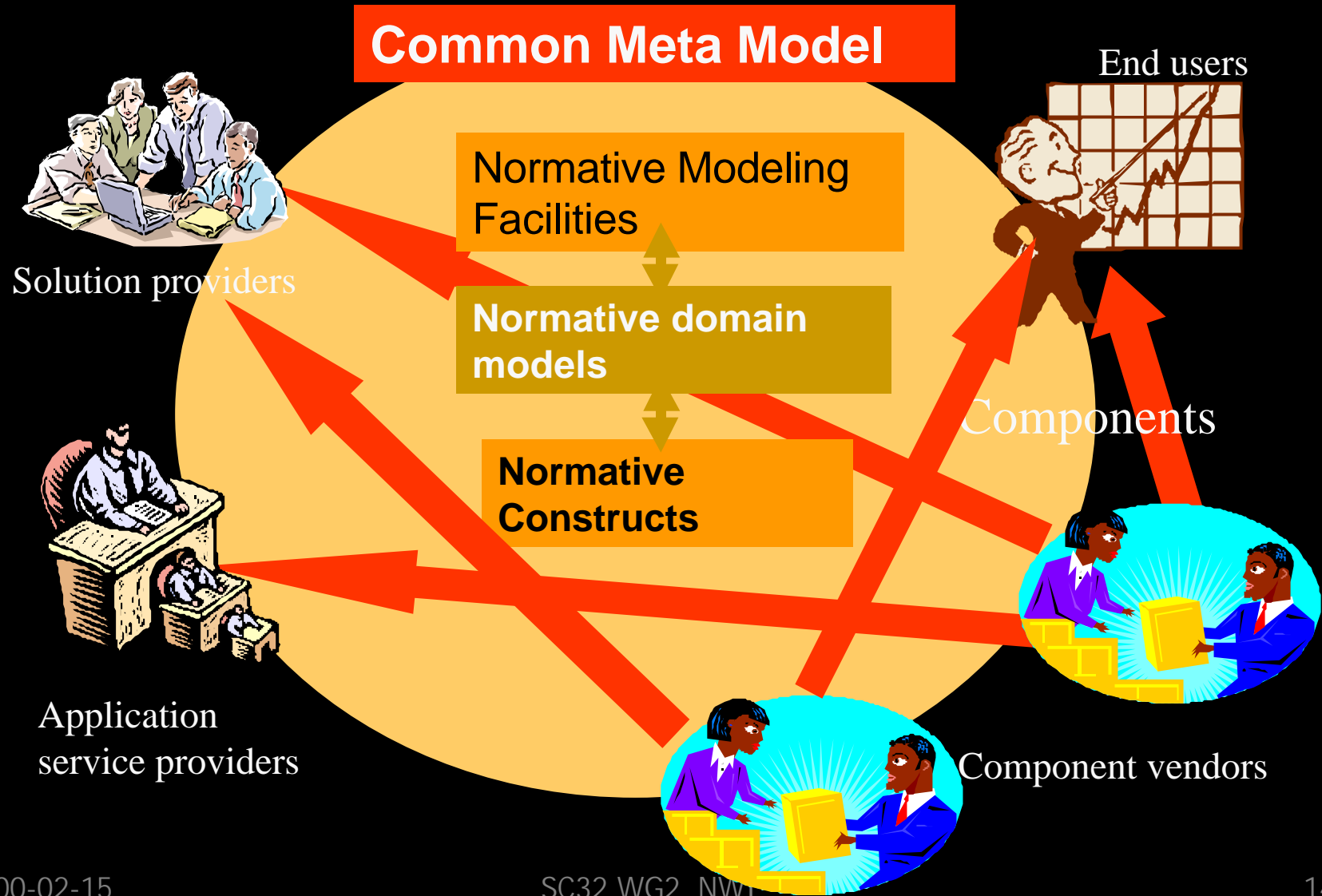
Component registration

Component Buy and Sell



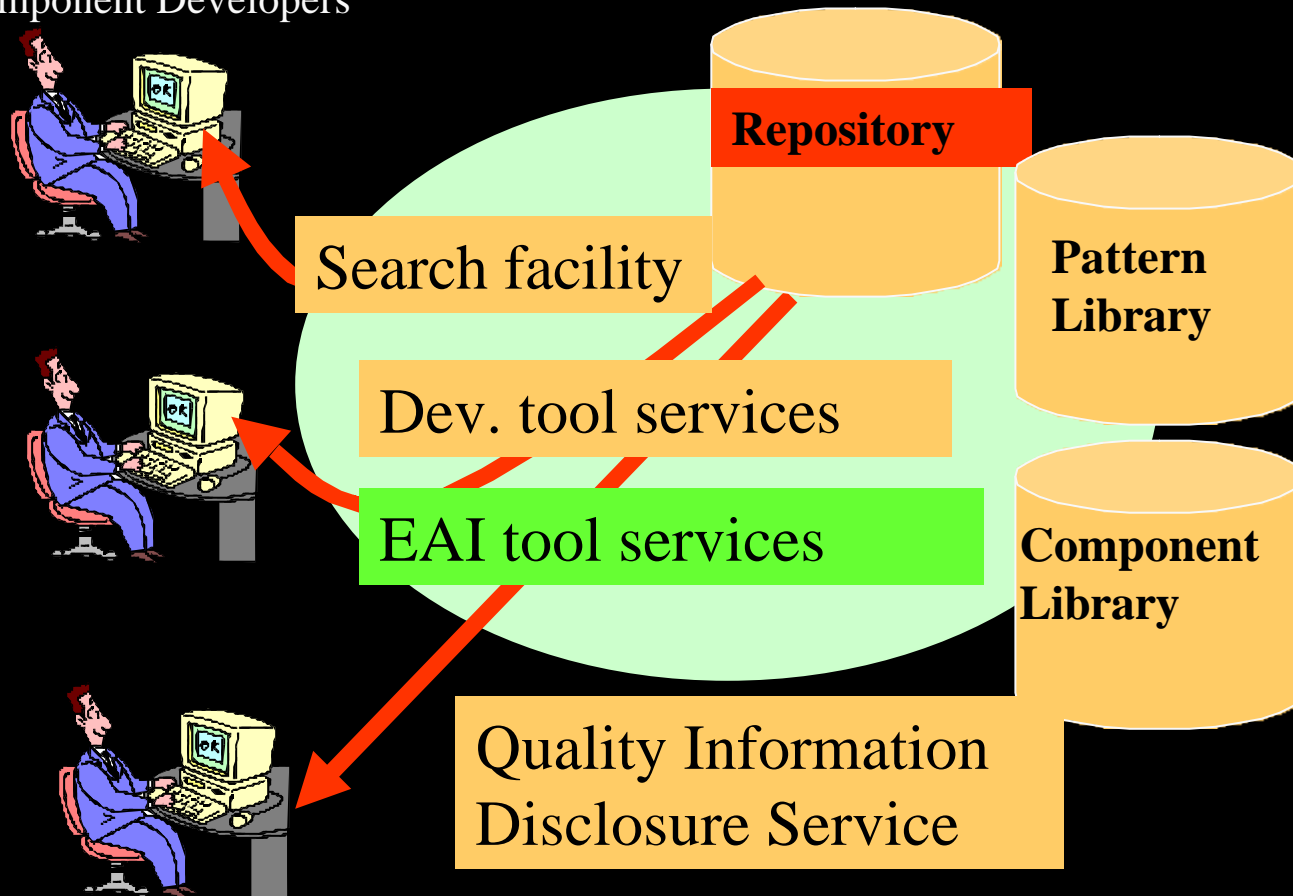
Component vendors

To accelerate component business

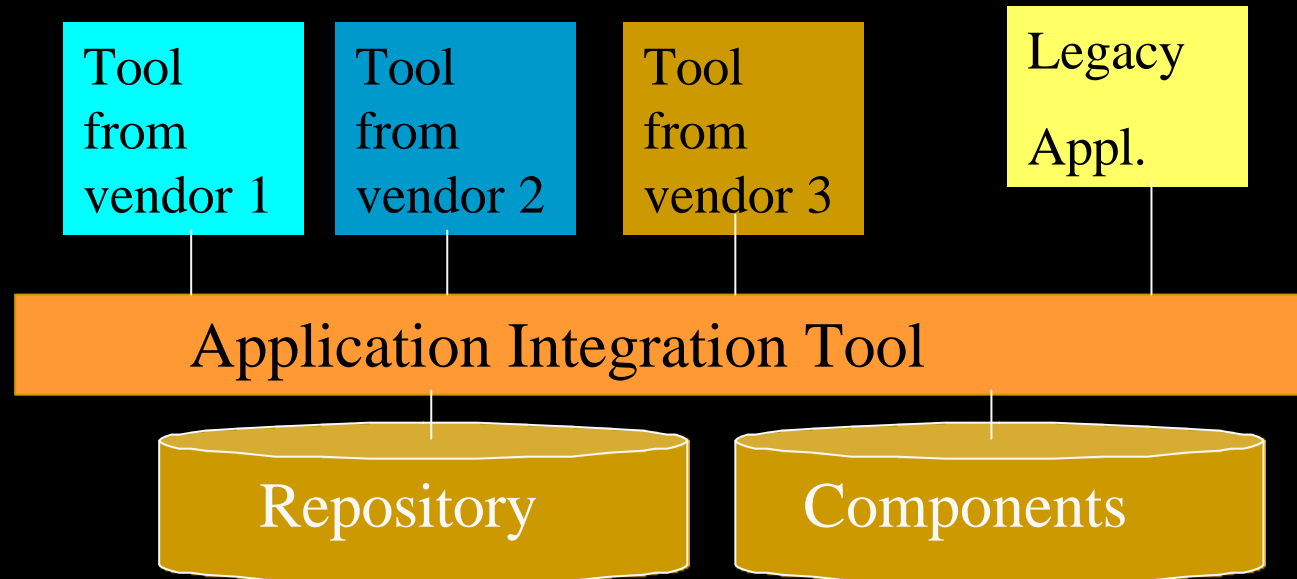


Component Development

Component Developers



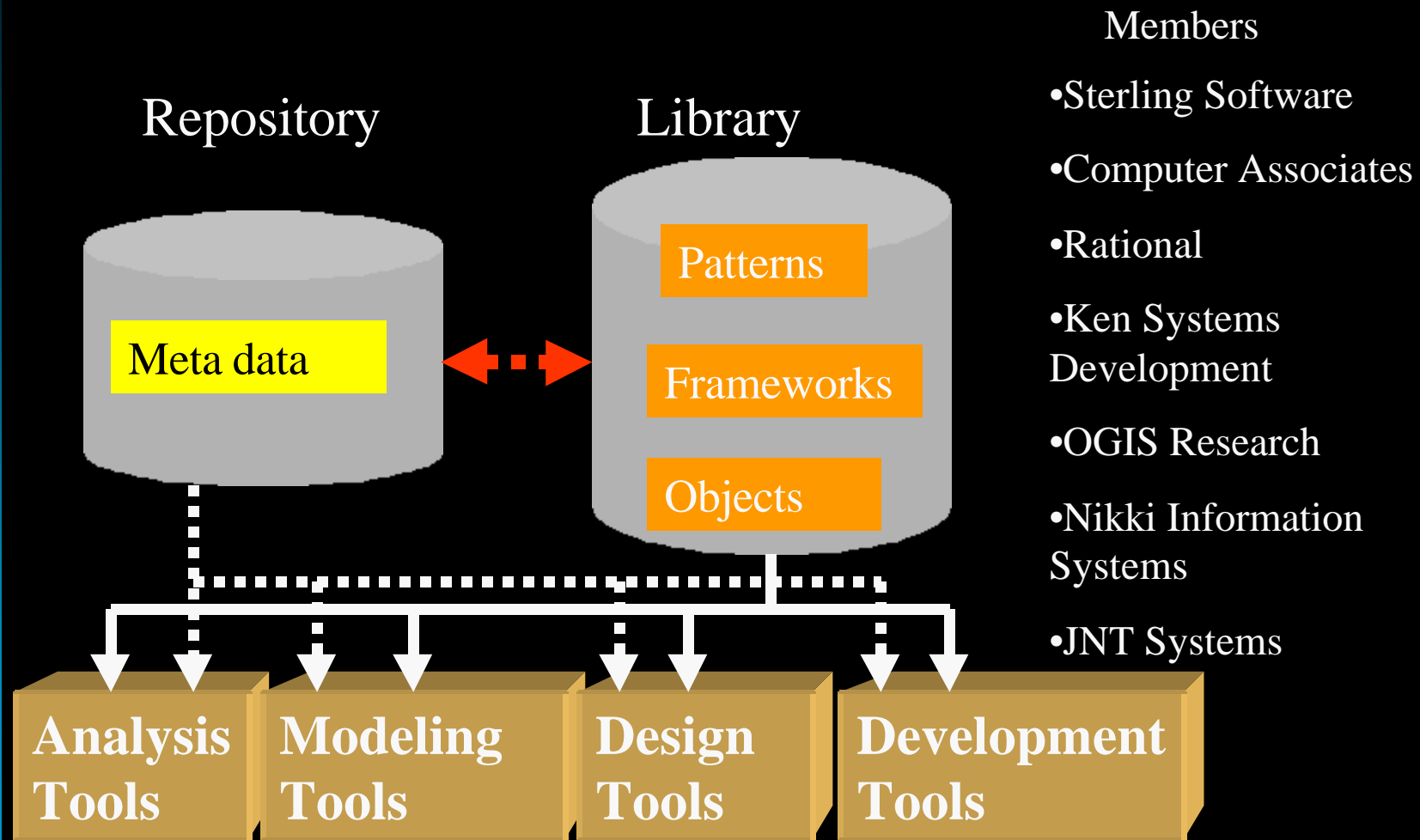
For enabling EAI



EAI: Enterprise Application Integration

CBOP Tool integration project

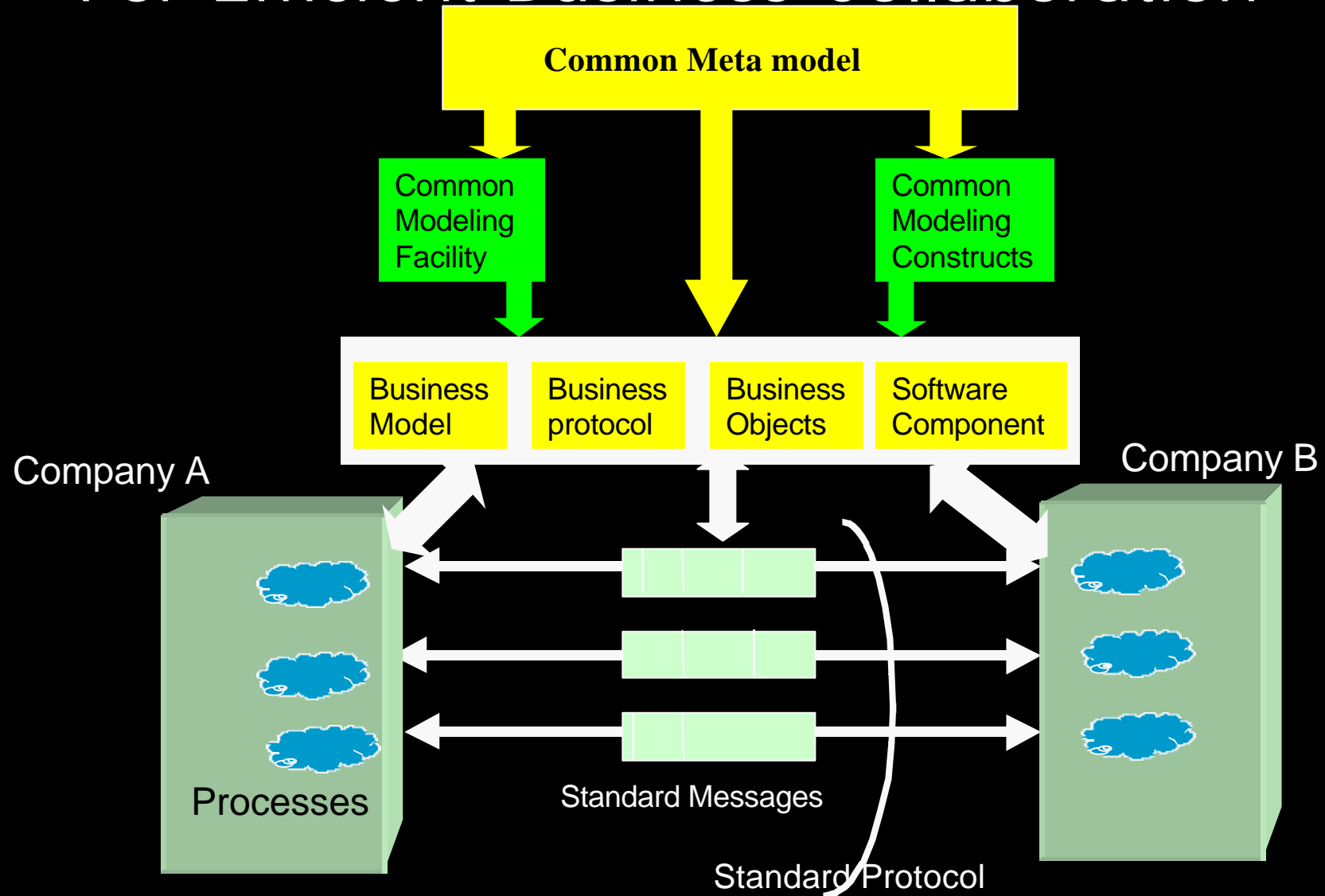
Government sponsored project



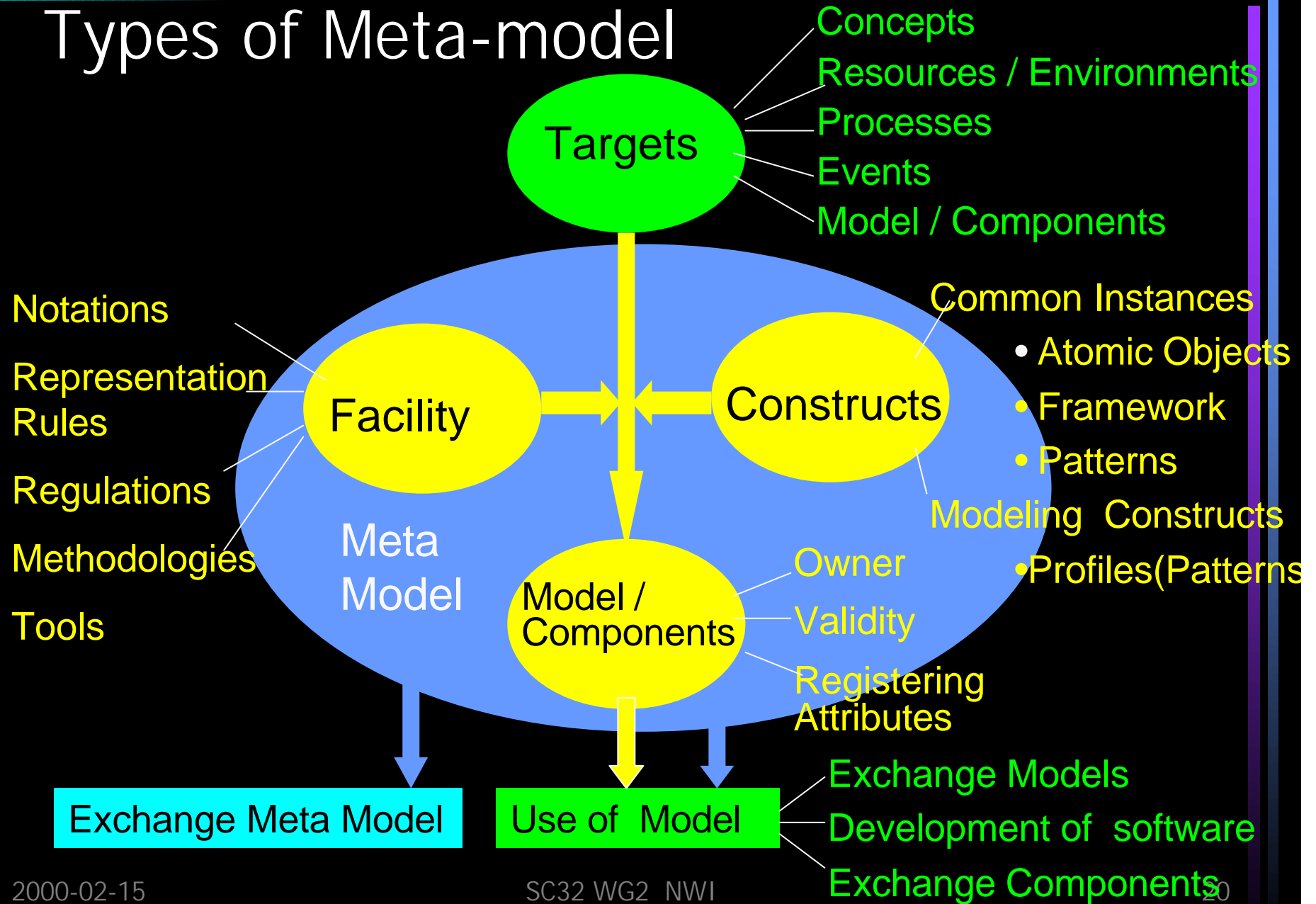
Framework of Meta Model

A Specific categorization of meta data
to cope with the needs

For Efficient Business Collaboration



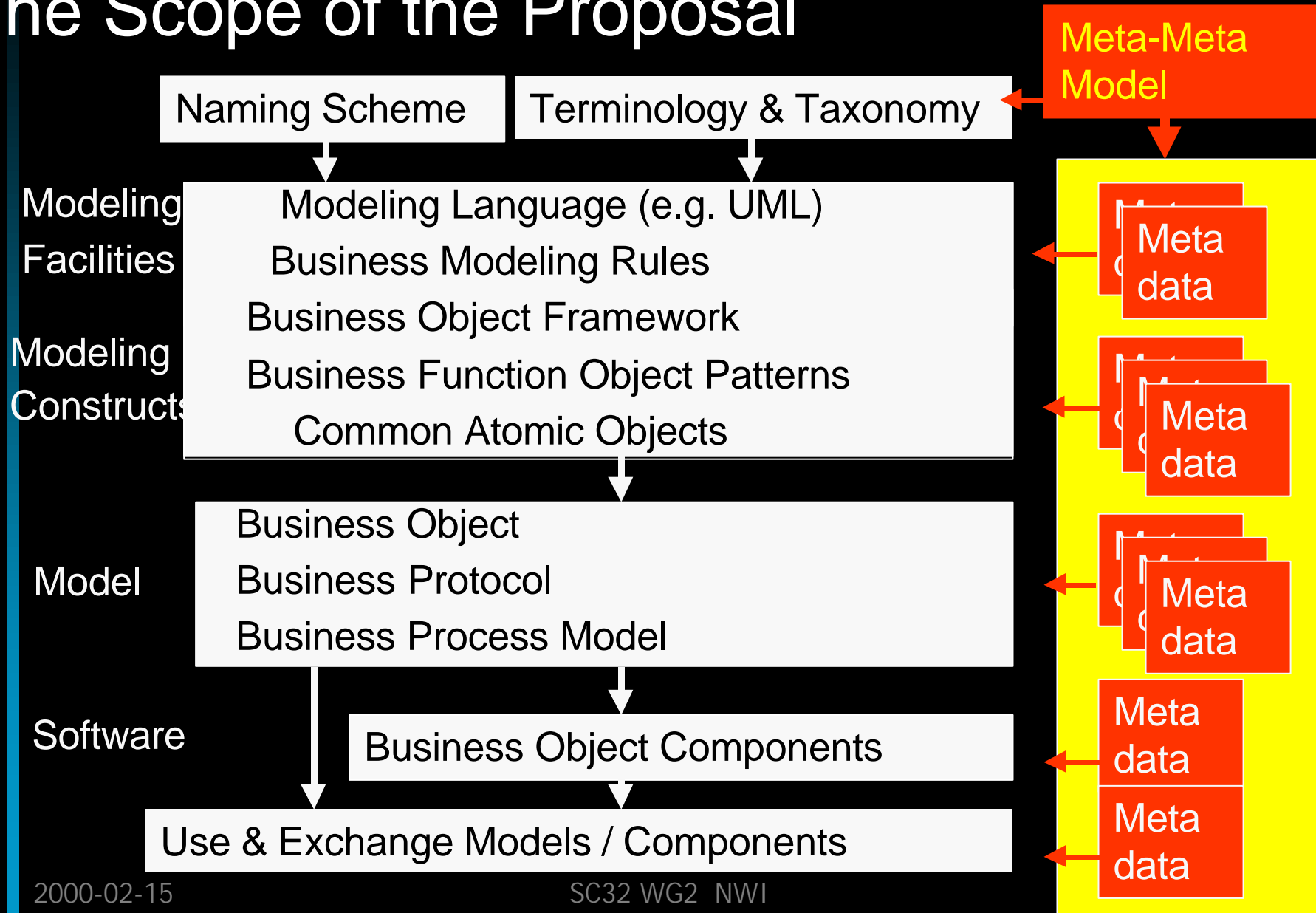
Types of Meta-model



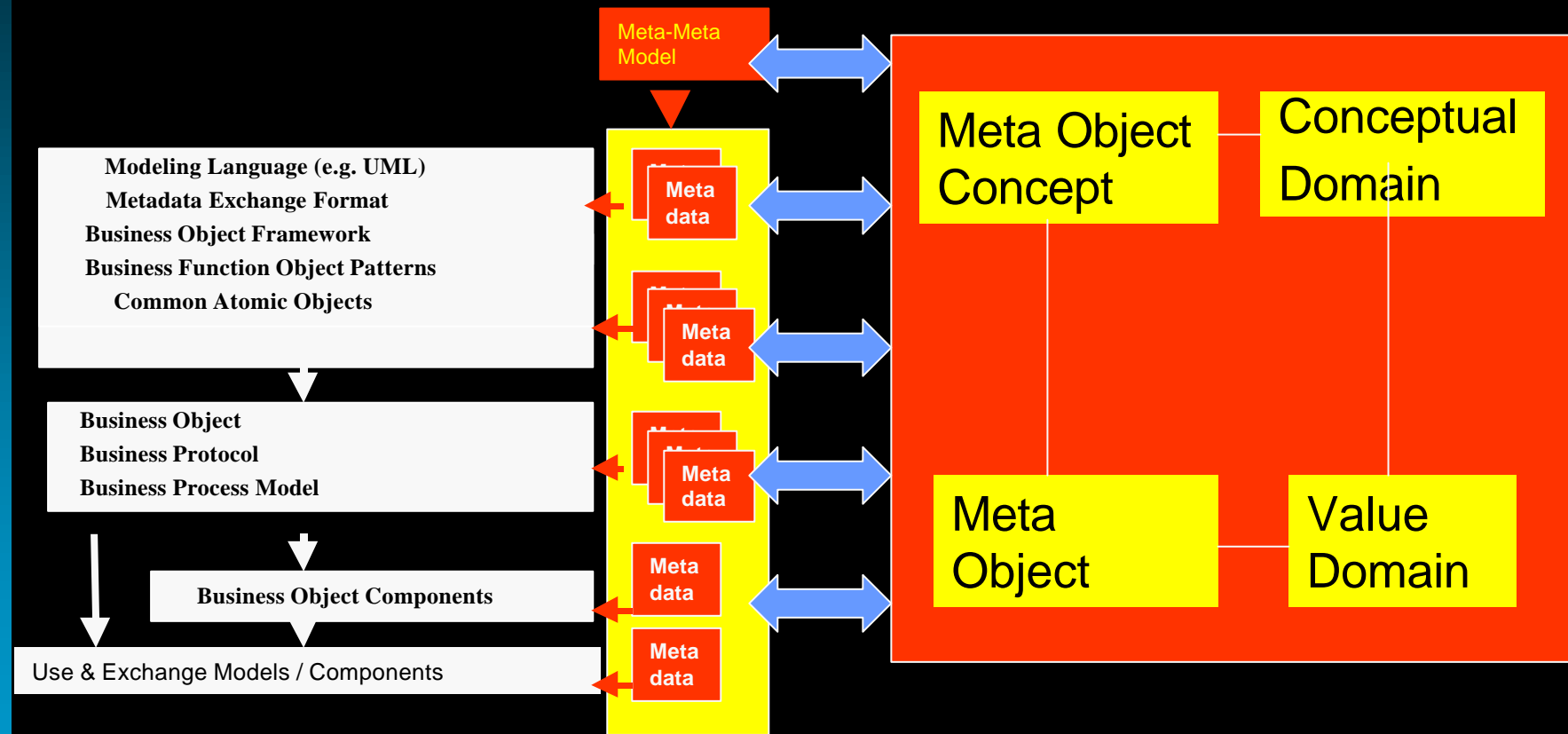
Necessary contents of the Framework

- Meta object for **Naming scheme**
- Meta object for **Terminologies and Taxonomy scheme**
- Meta object for **Identification scheme of various Business Objects**
- Meta object for **Modeling Facilities**
- Meta object for **Modeling Constructs**
 - Normative Atomic Objects**
 - Normative Value Domain**
 - Normative Modeling Patterns as profiles**
- Meta object for **Registering**

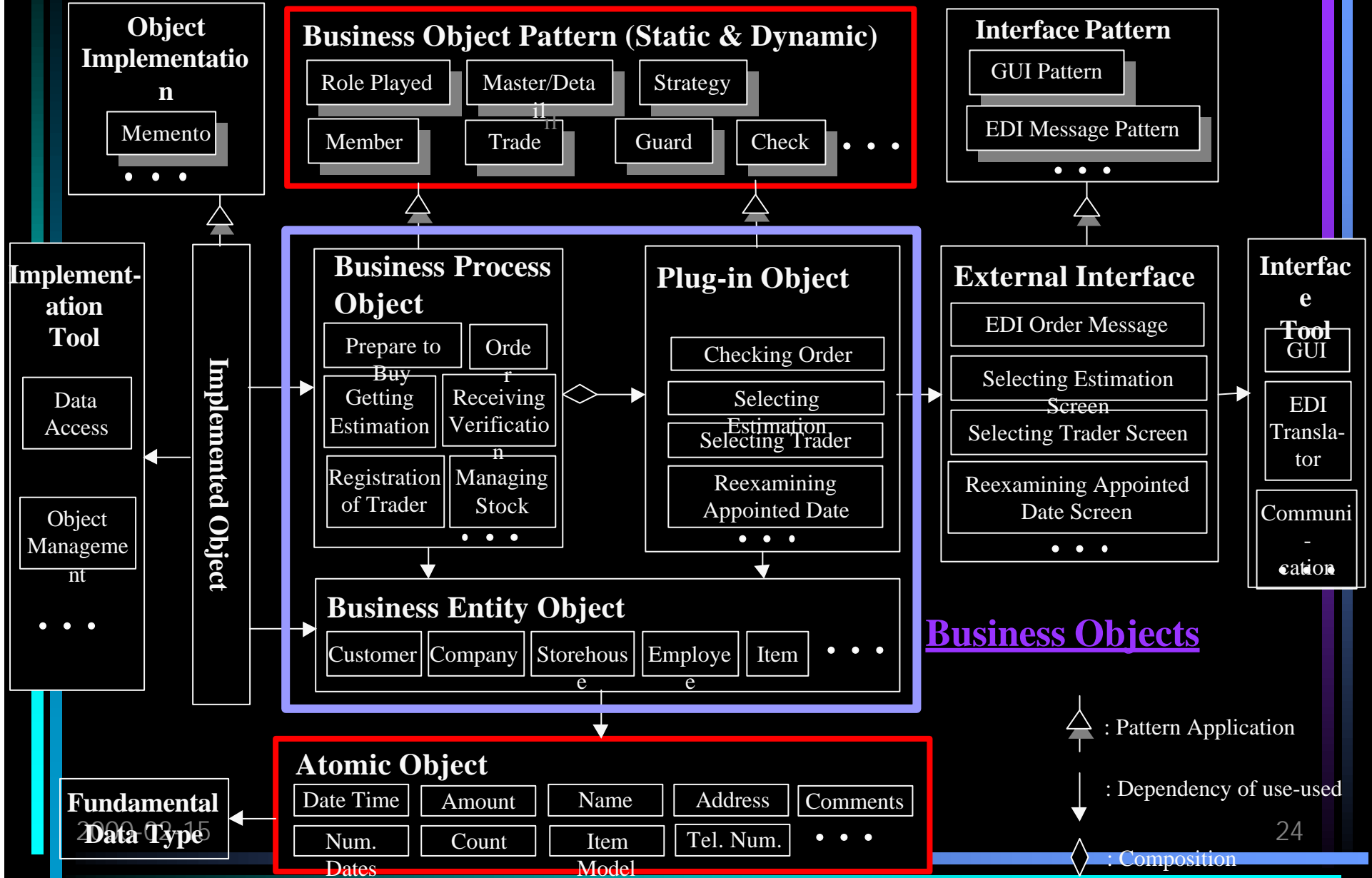
The Scope of the Proposal

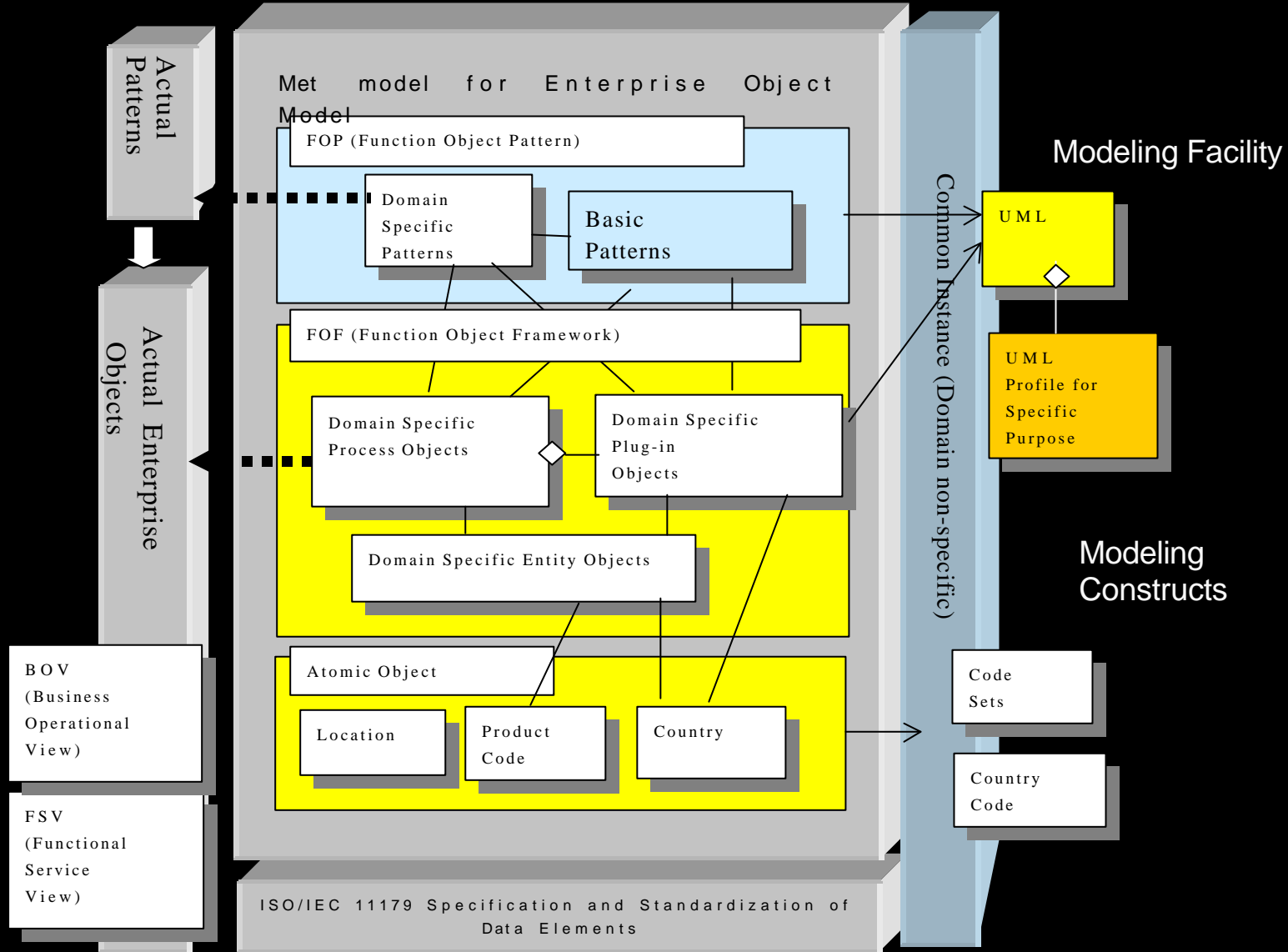


Meta-model representation extending 11179



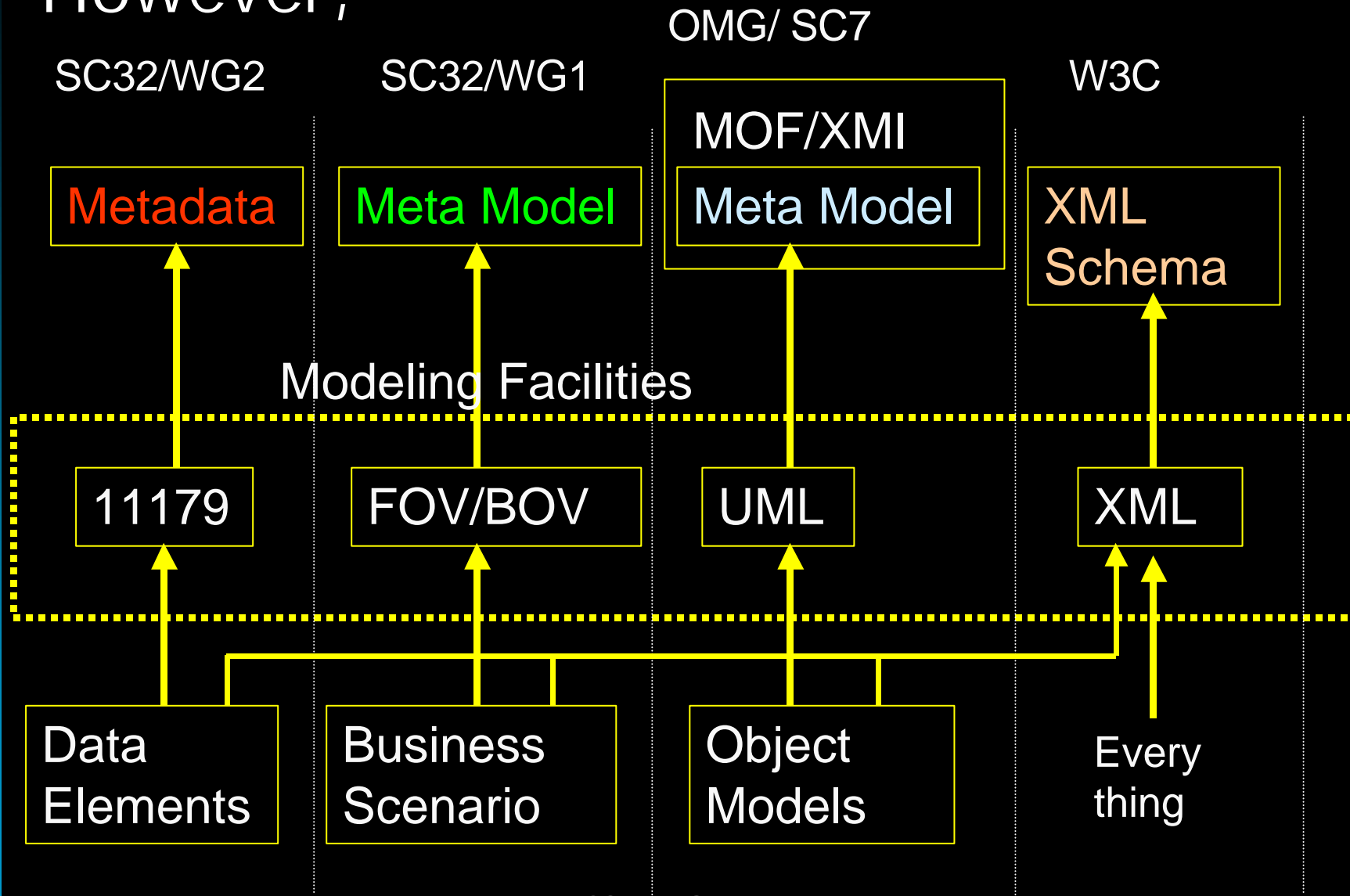
CBOP EBO Architecture





Project Approach

However,



Consortia discussing Meta model

CBOP

KCSC

OMG

ETeMII

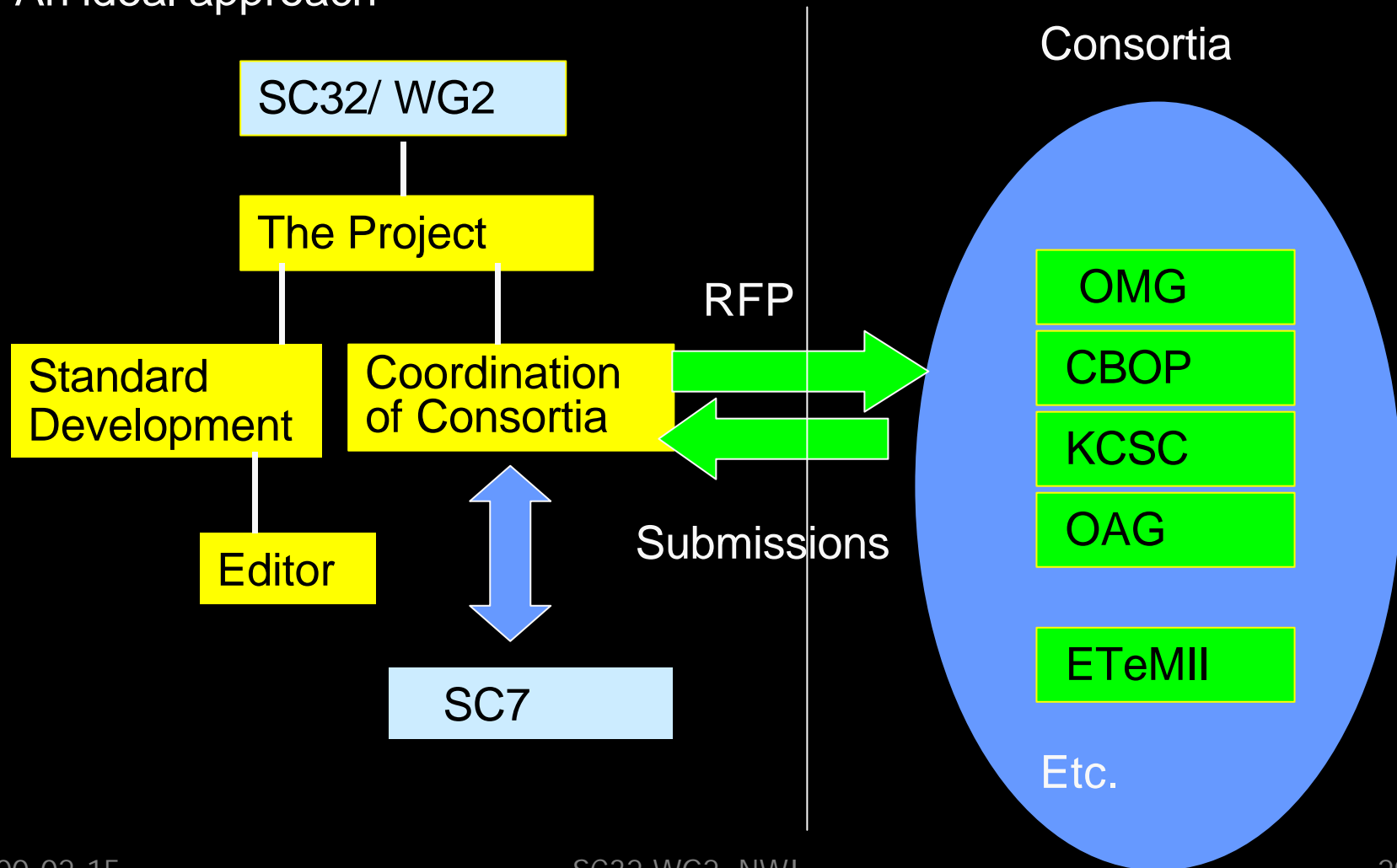
JINI Consortium

ActiveX Consortium

Metadata Initiative

Is it Possible ?

An ideal approach



Thank You

hori@tiu.ac.jp

<http://www.cbop.gr.jp>